



SMALL PATCH ANTENNA ARTICULATING WALL/POLE MOUNT ATS-ARTMNT-SP



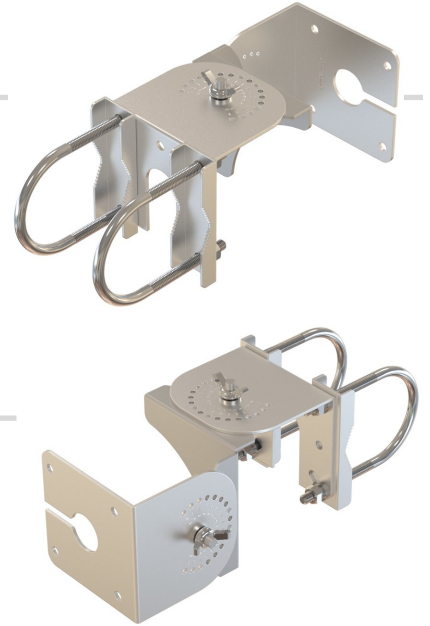
MECHANICAL SPECIFICATIONS

Dimensions: 3"x 3"x 6" (76 x 76 x 152.4mm)
Weight: 1.3 lbs. (0.59 kg.)
Installation: Wall/Pole Mount
Pole Mount Diameter: 2" (50mm)
Max Vertical Articulation: $\pm 75^\circ$
Max Horizontal Articulation: $\pm 75^\circ$

INCLUDED HARDWARE

Includes U-bolts for pole mounting. Installer is required to provide any additional mounting/fastening hardware for other mounting situations (brick, concrete, sheet rock, etc.)

Ships with the AccelTex Solutions smaller patch antennas



ENVIRONMENTAL SPECIFICATIONS

Installation Environment: Indoor or Outdoor
Wind Velocity: 130 mph (210 km/h)

WARRANTY

1 Year Limited Warranty

SMALL PATCH ANTENNA ARTICULATING WALL/POLE MOUNT ATS-ARTMNT-SP

